

YEAR 2023

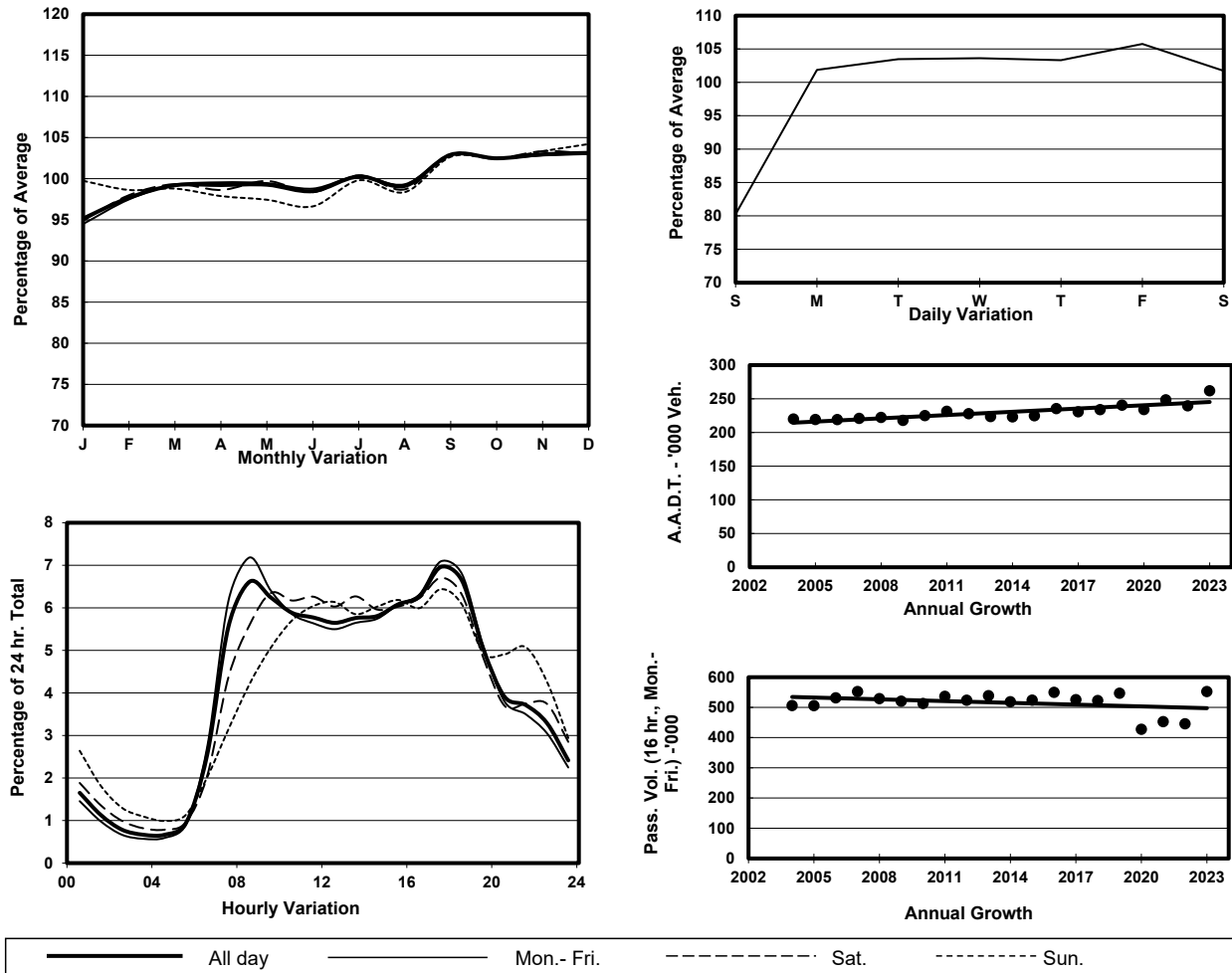
Location

Screenline T-T(North end of Tai Po & Yuen Long)

Stations on Cordon/Screenline

5003, 5016, 5041, 6206, 6211 and 6212

1. TRAFFIC FLOW VARIATION AND GROWTH



2. TRAFFIC CHARACTERISTICS (BY DIRECTION)

Parameter	All - Day	Mon. - Fri.	Sat.	Sun.
SOUTH BOUND				
A.A.D.T.	130680	136930	133100	107430
R 12 / 24 - %	73.7	74.9	72.9	67.6
R 16 / 24 - %	88.7	89.2	88.1	86.2
AM Peak Hour	0800-0900	0800-0900	0900-1000	0900-1000
One-way flow at AM peak hour	8670	9750	8630	5740
T - % (AM)	-	19.8	-	-
PM Peak Hour	1700-1800	1700-1800	1700-1800	1700-1800
One-way flow at PM peak hour	8930	9450	9020	7010
T - % (PM)	-	12.3	-	-
Prop.of commercial vehicles - 16 hr.	-	16.9	-	-
NORTH BOUND				
A.A.D.T.	131090	137390	136180	104970
R 12 / 24 - %	72.8	74	71.7	66.2
R 16 / 24 - %	89.7	90.5	88.5	85.9
AM Peak Hour	0800-0900	0800-0900	0900-1000	0900-1000
One-way flow at AM peak hour	8640	9960	8470	5020
T - % (AM)	-	17.2	-	-
PM Peak Hour	1700-1800	1700-1800	1700-1800	1700-1800
One-way flow at PM peak hour	9290	10020	9050	6670
T - % (PM)	-	14.7	-	-
Prop.of commercial vehicles - 16 hr.	-	17.4	-	-

3. OTHER INFORMATION AND COMMENT

4. Vehicle classification and occupancy - Monday to Friday

Time		Class of vehicle									
		Motor Cycle	Private Car	Taxi	Private LB	PLB	Goods veh.		Non Fr. Bus	Fr. Bus	
							Light	M & H		SD	DD
0700-0800	Pro	4.1	50.8	7.7	1.2	1.9	18.7	11.9	2.2	0.1	1.5
	Ocp	1.0	1.3	1.9	6.8	14.8	1.3	1.1	16.0	1.0	52.1
0800-0900 Peak Hour	Pro	1.9	52.1	8.1	0.9	1.6	16.9	14.7	2.6	0.1	1.2
	Ocp	1.0	1.3	2.0	3.8	13.6	1.4	1.2	13.6	1.0	44.8
0900-1000	Pro	1.1	45.9	7.5	0.3	1.8	22.3	17.4	2.4	0.1	1.3
	Ocp	1.1	1.3	1.9	3.0	10.7	1.3	1.2	10.6	3.0	31.4
1000-1100	Pro	1.4	41.2	7.1	0.4	2.0	24.7	20.0	1.9	0.1	1.4
	Ocp	1.1	1.4	1.9	2.3	9.2	1.3	1.1	13.2	2.5	37.1
1100-1200	Pro	2.2	41.5	6.9	0.8	1.9	24.9	18.5	1.7	0.1	1.5
	Ocp	1.0	1.4	1.9	3.2	11.1	1.3	1.1	12.0	2.0	32.3
1200-1300	Pro	1.9	45.6	6.8	0.9	2.1	19.9	19.9	1.3	0.1	1.5
	Ocp	1.0	1.4	1.9	4.2	9.5	1.3	1.1	8.0	1.0	29.8
1300-1400	Pro	1.6	43.6	7.4	0.6	2.0	22.2	19.2	1.9	0.0	1.4
	Ocp	1.1	1.4	1.9	3.5	10.4	1.4	1.1	6.2	0.0	31.8
1400-1500	Pro	1.5	41.4	6.6	0.7	1.8	25.5	19.4	1.8	0.1	1.3
	Ocp	1.1	1.4	1.8	3.0	9.7	1.3	1.1	6.7	3.3	28.4
1500-1600	Pro	2.1	42.4	7.3	1.3	1.6	25.3	17.0	1.6	0.1	1.4
	Ocp	1.0	1.3	1.9	4.7	10.7	1.3	1.1	8.3	17.4	31.6
1600-1700	Pro	1.4	45.6	6.5	1.4	1.7	24.9	15.2	2.0	0.1	1.3
	Ocp	1.1	1.4	1.9	3.1	11.9	1.3	1.1	8.8	17.8	41.1
1700-1800	Pro	3.4	51.6	7.0	0.7	1.7	22.1	10.1	2.0	0.1	1.2
	Ocp	1.0	1.3	1.8	2.6	15.5	1.3	1.1	12.1	20.1	55.8
1800-1900	Pro	3.1	66.5	7.4	0.3	1.4	12.9	5.5	1.7	0.1	1.2
	Ocp	1.1	1.3	1.9	1.2	15.7	1.2	1.1	15.1	11.0	55.1
1900-2000	Pro	3.0	66.3	9.2	0.2	2.0	10.6	5.1	1.9	0.0	1.6
	Ocp	1.1	1.3	1.8	1.8	11.3	1.2	1.1	8.6	0.0	37.3
2000-2100	Pro	2.7	64.9	10.0	0.1	2.5	10.4	5.7	1.8	0.1	1.9
	Ocp	1.1	1.3	1.8	1.0	9.7	1.2	1.0	7.0	1.0	33.0
2100-2200	Pro	3.0	64.1	12.9	0.1	2.3	9.5	4.6	1.4	0.0	2.0
	Ocp	1.1	1.3	1.7	1.3	9.3	1.3	1.1	7.1	0.0	28.5
2200-2300	Pro	3.1	65.7	13.9	0.3	2.4	7.6	3.7	1.5	0.1	1.9
	Ocp	1.1	1.3	1.8	3.0	9.5	1.3	1.1	8.5	8.1	23.5
16 hours	Pro	2.3	50.8	7.9	0.7	1.9	19.5	13.6	1.9	0.1	1.4
	Ocp	1.1	1.3	1.9	3.8	11.5	1.3	1.1	10.7	8.6	37.7

Legend: Pro. Proportion of vehicles in % (Sum may not add up to 100% due to figure rounding)*

Ocp. Average occupancy of vehicles including both driver and passengers*

M&H Medium and Heavy

* All traffic data are collected from combined bounds